

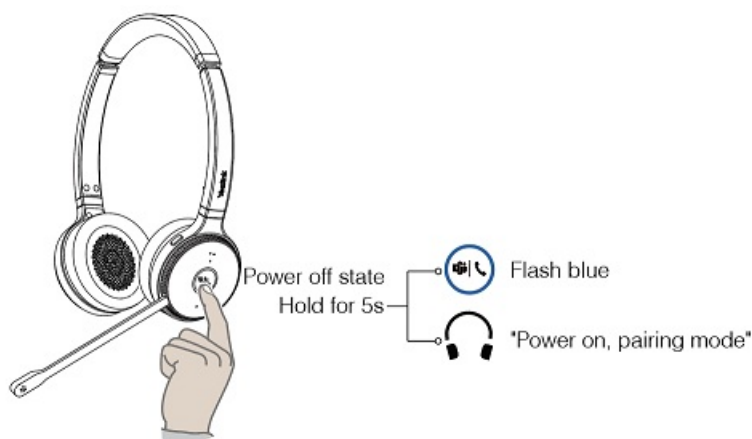
Pair WDD60 with Headset (Optional)

TIP

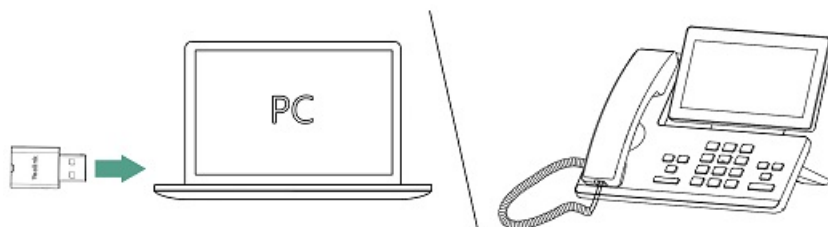
If the WDD60 is unpaired or bought separately, you will need to pair the WDD60 with the headset.

WH62 Portable

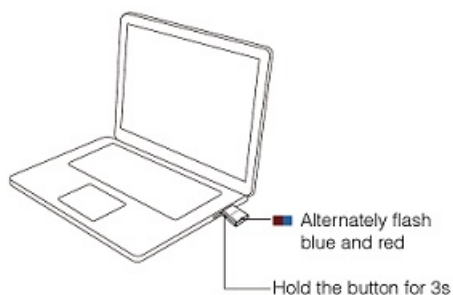
1. Power on the headset and put it into pairing mode.



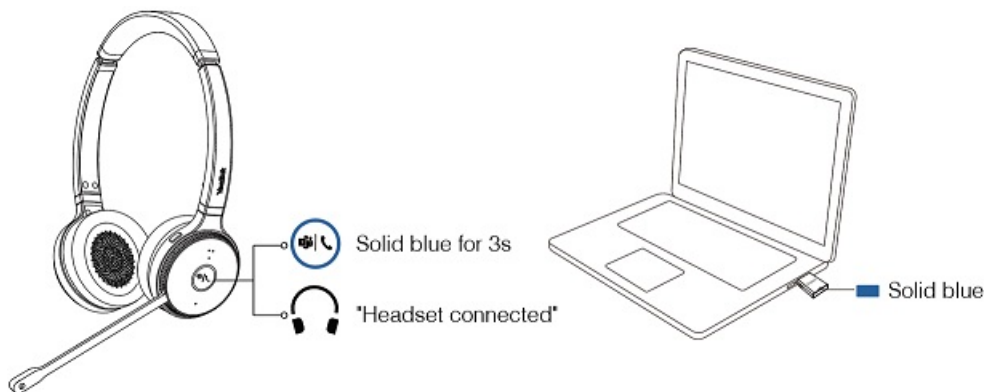
2. Connect the WDD60 to a PC or desk phone and put the WDD60 into pairing mode.



3. Press and hold the button of the WDD60 for 3s, and the LED indicator flashes blue and red alternately.

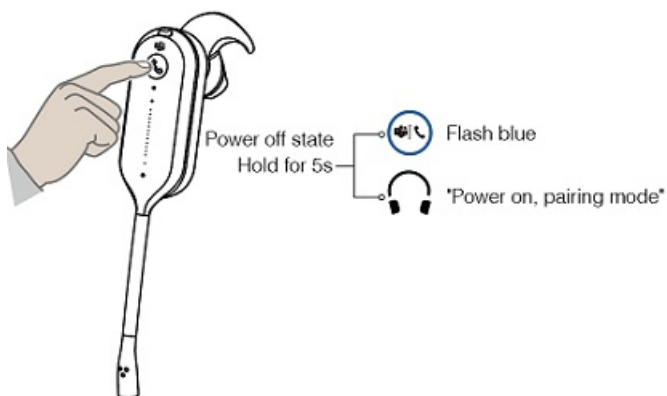


- After pairing was successful, the LED indicator of the WDD60 turns solid blue.

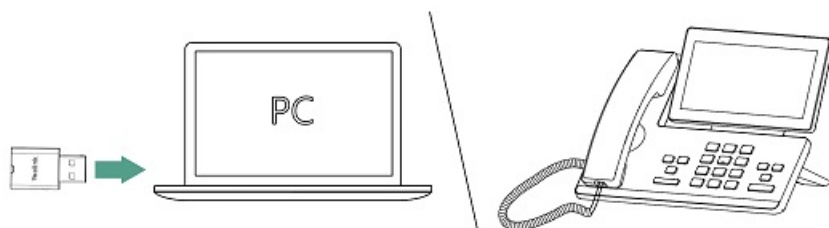


WH63 Portable

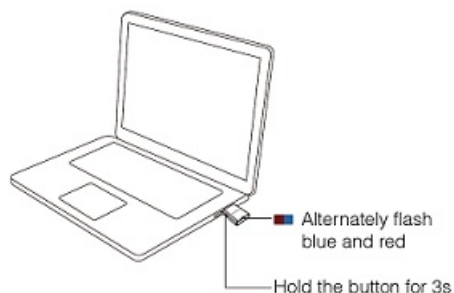
- Power on the headset and put it into pairing mode.



- Connect the WDD60 to a PC or desk phone and put the WDD60 into pairing mode.



- Press and hold the button of the WDD60 for 3s, and the LED indicator flashes blue and red alternately.



4. After pairing was successful, the LED indicator of the WDD60 turns solid blue.

